

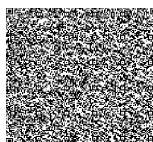
One Reverse Recipe to Rule them All

North
 Dir: Rotate ♠
 Vul: Rotate ♥
 ♦
 ♣

West East
 ♠ ♠
 ♥ ♥
 ♦ ♦
 ♣ ♣

South
 ♠
 ♥
 ♦
 ♣

Click here to see this recipe at <https://bridgeoutahead.com/bridgeddeal/>



This recipe generates deals suitable for bidding a reverse.

Opener will have 17-21 total points.

Responder will have 6+ HCP.

Opener will have 5 of the first bid suit, and 4 of the second. Reverses can, of course, be bid with other distributions. This recipe purposely focuses on the 5-4 case.

Opener's second suit will be higher ranking than the first.

Generate 1 board.
 No hands rotation.

Pair Settings	N/S HCP	N/S Ctrl	N/S LTC	E/W HCP	E/W Ctrl	E/W LTC
	0-40	0-12	0-24	0-40	0-12	0-24
Shaper Tab 1	West	North	East	South		
HCP/Ctrl/LTC	0-37/0-12/0-12	16-20/0-12/0-12	0-8/0-12/0-12	6-37/0-12/0-12		
Shape(s)	Any	Any 4=x-x-x x-5=x-x	Any No 5 Plus	Any No 3 Hearts No 4 Spades		
Shaper Tab 2	West	North	East	South		
HCP/Ctrl/LTC	0-37/0-12/0-12	16-20/0-12/0-12	0-8/0-12/0-12	6-37/0-12/0-12		
Shape(s)	Any	Any x-4=x-x x-x-5=x	Any No 5 Plus	Any No 4 Hearts No 4 Diamonds		
Shaper Tab 3	West	North	East	South		
HCP/Ctrl/LTC	0-37/0-12/0-12	16-20/0-12/0-12	0-8/0-12/0-12	6-37/0-12/0-12		
Shape(s)	Any	Any 4=x-x-x x-x-5=x	Any No 5 Plus	Any No 4 Spades No 4 Diamonds		
Shaper Tab 4	West	North	East	South		
HCP/Ctrl/LTC	0-37/0-12/0-12	16-20/0-12/0-12	0-8/0-12/0-12	6-37/0-12/0-12		
Shape(s)	Any	Any No 4 Major x-x-4=x x-x-x-5	Any No 5 Plus	Any No 4 Diamonds No 5 Clubs		
Shaper Tab 5	West	North	East	South		
HCP/Ctrl/LTC	0-37/0-12/0-12	16-20/0-12/0-12	0-8/0-12/0-12	6-37/0-12/0-12		
Shape(s)	Any	Any No 4 Spades No 4 Diamonds x-4=x-x x-x-x-5	Any No 5 Plus	Any No 4 Hearts No 5 Clubs		

Shaper Tab 6**HCP/Ctrl/LTC****Shape(s)****West**

0-37/0-12/0-12

Any

North

16-20/0-12/0-12

Any

No 4 Hearts

No 4 Diamonds

4=x-x-x

x-x-x-5

East

0-8/0-12/0-12

Any

No 5 Plus

South

6-37/0-12/0-12

Any

No 4 Spades

No 5 Clubs